



2021

MAXIS OEE – MACHINE UTILIZATION MONITORING MACHINE MONITORING & MAINTENANCE SYSTEM



IT DEPARTMENT

OEE - MACHINE UTILIZATION MONITORING

Introduction:

- Real-time Machine Utilization Dashboard System is a sub-module of OEE and allows Plastictecnic to have real-time visibility & insights on current operation (people & machine) with minimal human intervention

Objective:

- Real-time data capturing of machine uptime & downtime
- Real-time machine utilization dashboard
- Improve production productivity



OEE - MACHINE UTILIZATION MONITORING

Hardware & Commissioning

- Included in quotation



1 x Programmable
logic controller
(PLC)



1 x Industrial PC

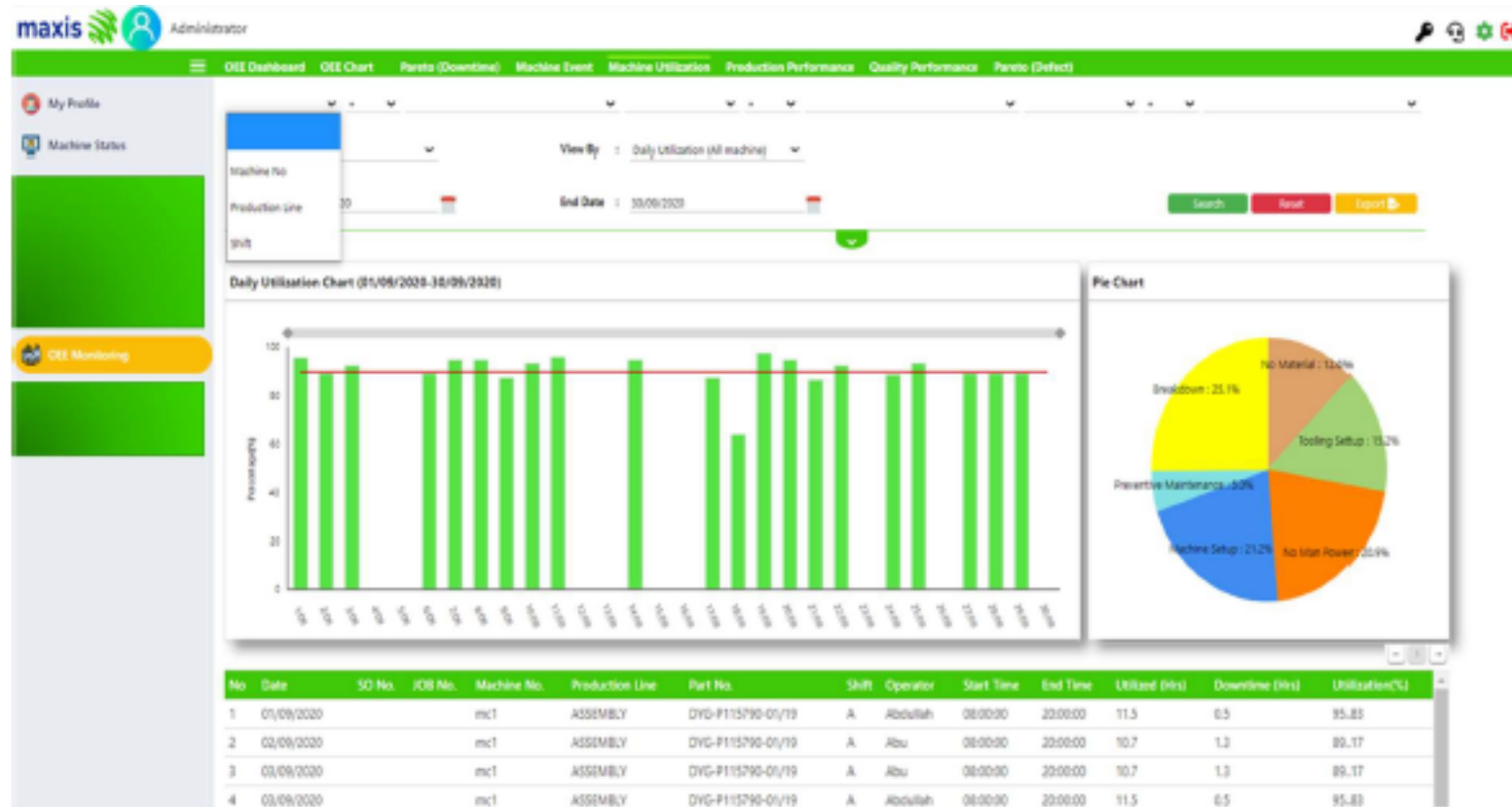


Panel wiring accessories

OEE - MACHINE UTILIZATION MONITORING

Hardware & Commissioning

- Included in quotation



1. Real-time machine utilization dashboard (Web-Cloud based)
2. Real-time machine utilization TV display Dashboard



OEE - MACHINE UTILIZATION MONITORING

Project Phase

- Implementation shall be divided into 2 phases

Phase 1: To focus on current available functions which stated in this quotation: *Real-time Machine Utilization*

Phase 2: may focus on the additional functions such as OEE, machine output monitoring and tracking. *(not part of this quotation)*



OEE - MACHINE UTILIZATION MONITORING

License type: Enterprise version

1. Two user licenses (1x system admin & 1x user) :

- System setup, configuration, and maintenance; also for those who need to perform operation related tasks, can drill down to both current and historical machine utilization

2. One TV display license :

- For real-time machine utilization status (*Hardware – TV is not included in this quotation*)



OEE - MACHINE UTILIZATION MONITORING

Services Included

1. System Installation
2. Setup
3. Configuration
4. Application Training &
5. Implementation



OEE - MACHINE UTILIZATION MONITORING

Hardware (Recommended by Maxis)

No	Hardware	Unit	Cost (RM)
1	55" Smart TV	1	2,000.00
2	Desktop Computer (i5 + 8GB Ram + Windows 10)	2 Set	7,000.00

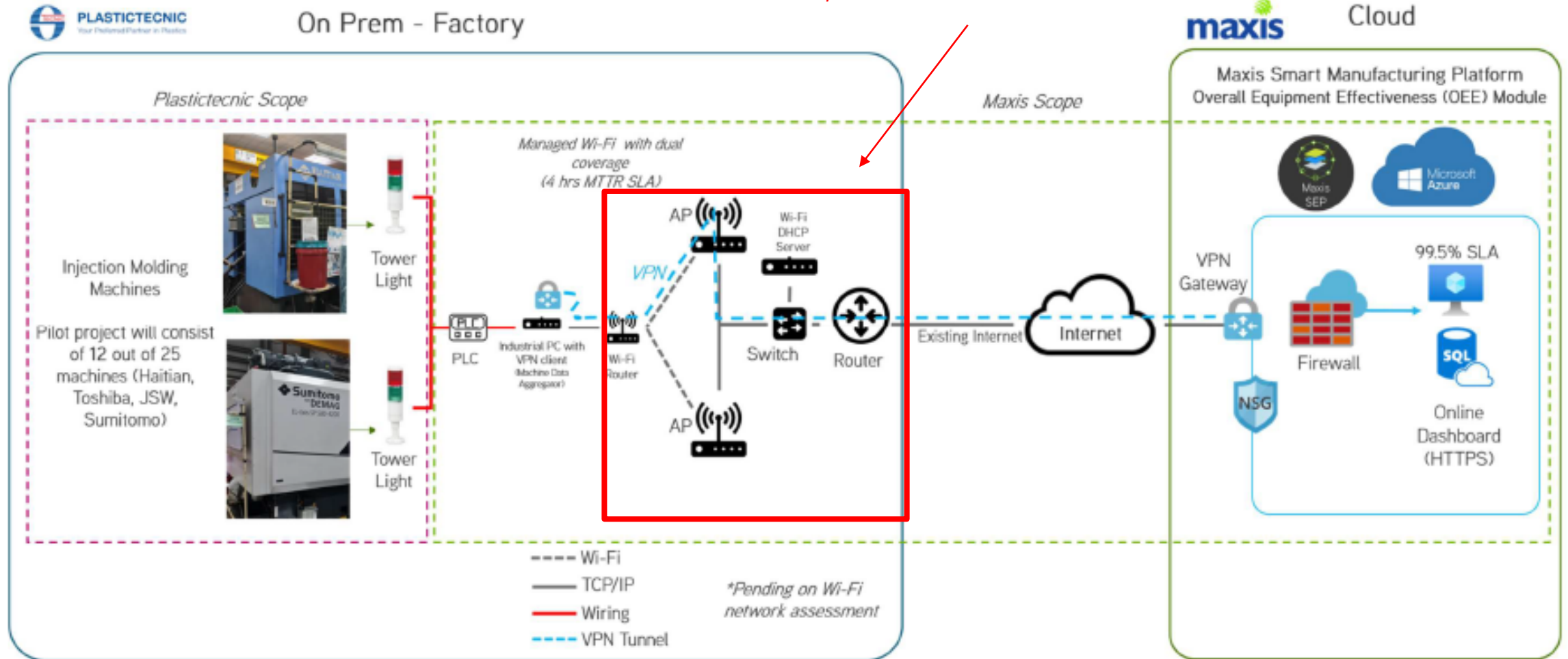
****Not included in quotation**



OEE - MACHINE UTILIZATION MONITORING

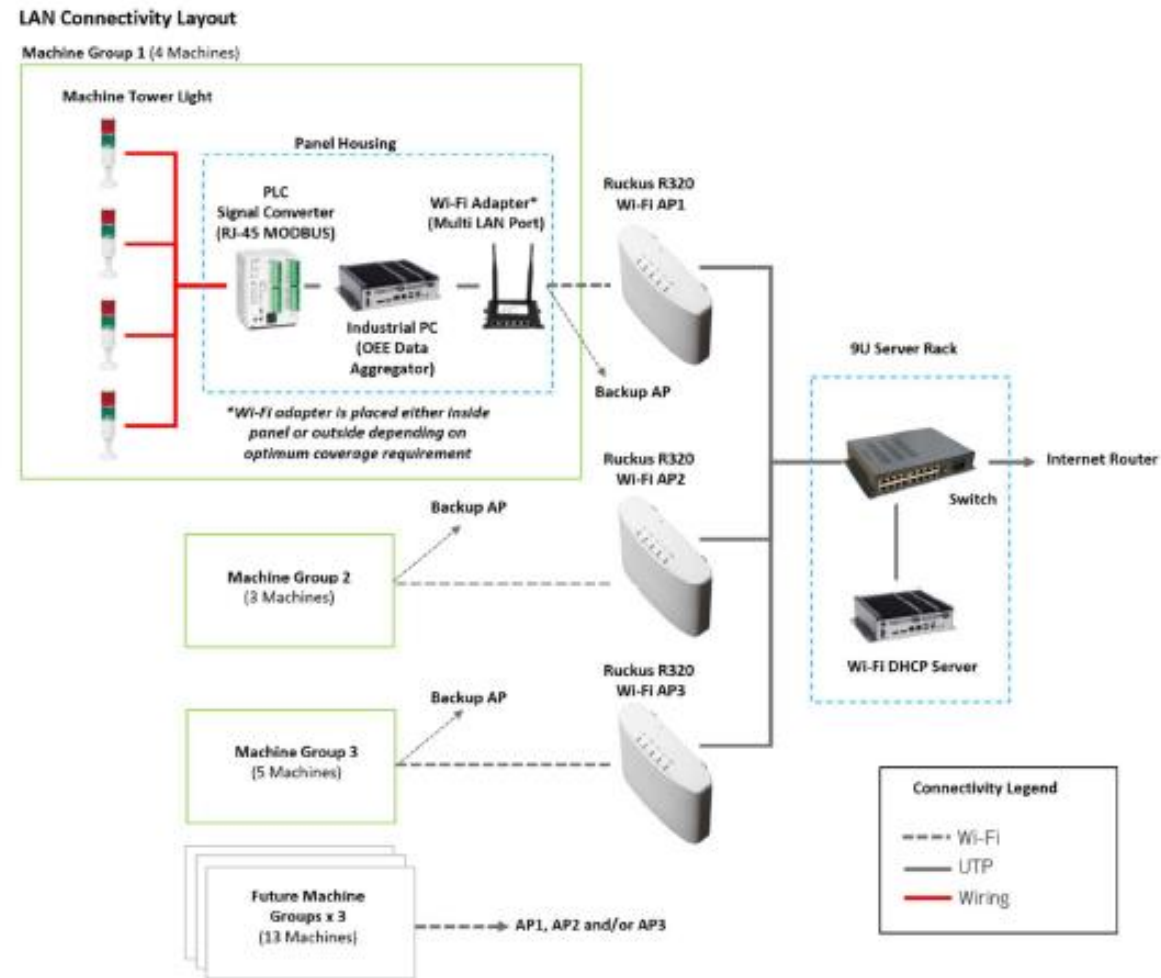
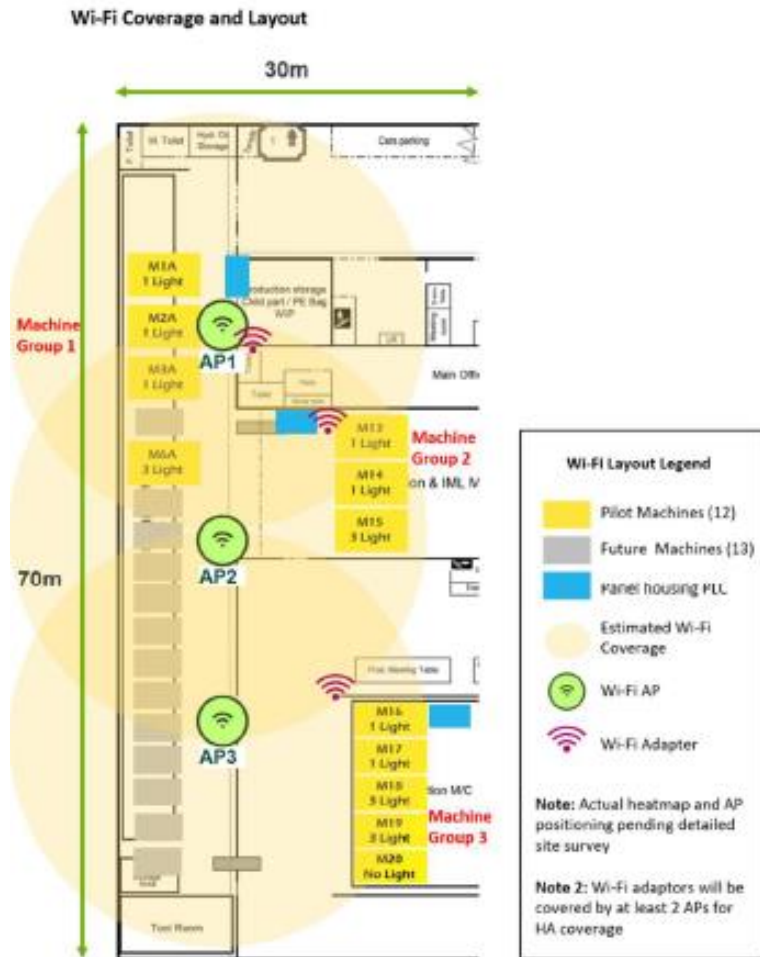
High Level Solution Design

Infrastructure is optional from Maxis, can take other vendor



OEE - MACHINE UTILIZATION MONITORING

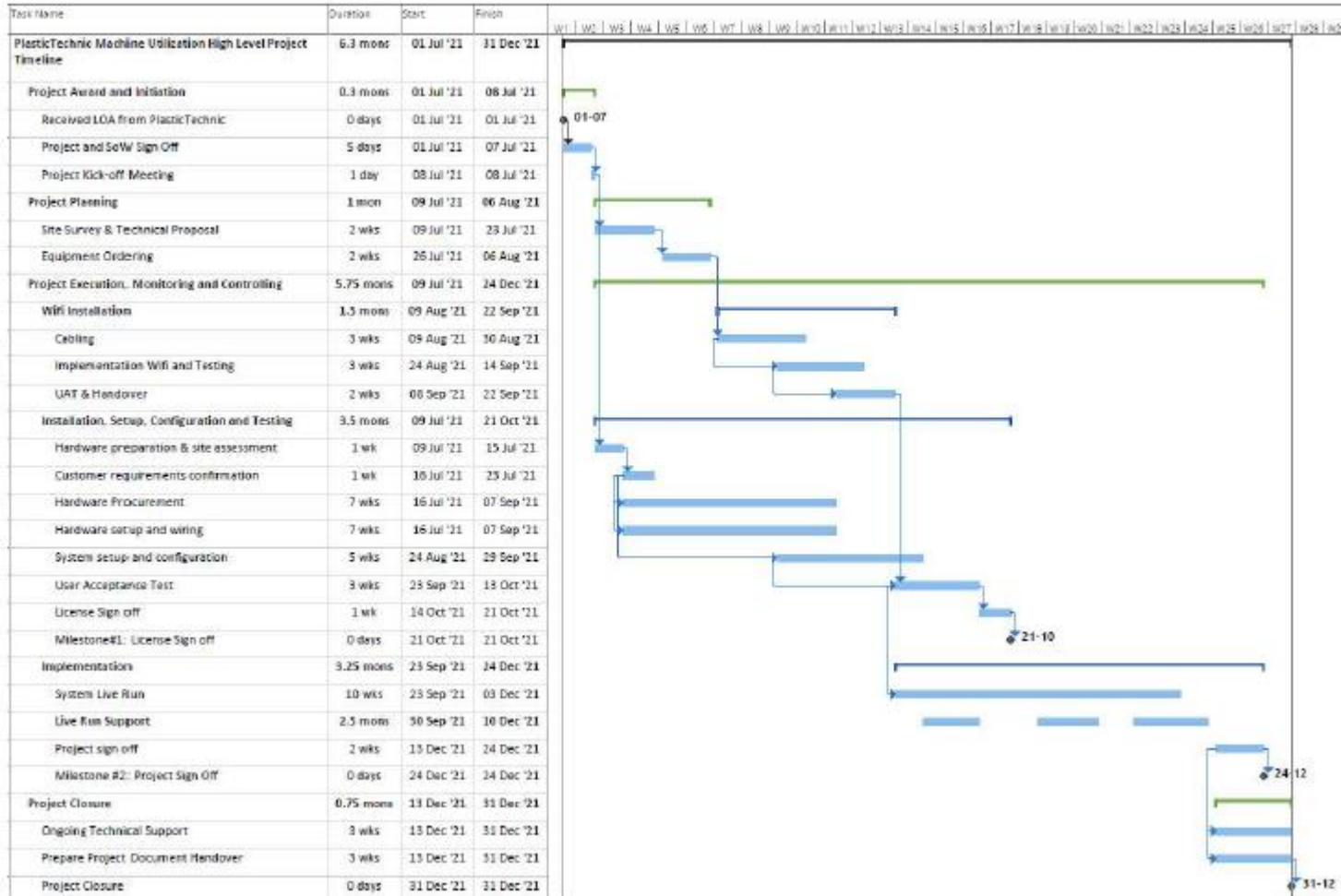
High Level Solution Design – Infrastructure Proposed by Maxis



OEE - MACHINE UTILIZATION MONITORING

Project Timeline

The estimated duration of the project is 6 months



OEE - MACHINE UTILIZATION MONITORING

Post-Sales Support

1. OEE - Machine Utilization Dashboard access
2. Real-time Machine Utilization Dashboard TV Display
3. Wi-Fi connectivity issues within 8x5xNBD SLA



OEE - MACHINE UTILIZATION MONITORING

Commercial Proposal #Option 1

ITEM	OTC (RM)	MRC (RM)
<p>Machine Utilization Dashboard System (Web-Cloud Based Solution) Including Licenses, Maintenance & Support Access to Cloud Platform embedded with VPN Security for machine connectivity Two user licenses (1x system admin & 1x user) One TV display license Real-time data capturing of machine uptime and downtime of 12 injection moulding machine for one site only (factory located at Bangi) 3 data acquisition panel (wall mounted). Each consisting of :</p> <ul style="list-style-type: none"> • 1 x PLC, • 1 x Industrial PC • Panel wiring accessories <p>Wiring cost (include Cable, Metal Trunking and installation) System Installation, setup, configuration, application training, hardware & commissioning & implementation FOC: 2 x Samsung A7 Tablet</p>	152,000	4,500
TCV (2 Years Contract)	260,000	



OEE - MACHINE UTILIZATION MONITORING

Commercial Proposal #Option 2

ITEM	OTC (RM)	MRC (RM)
Machine Utilization Dashboard System (Web-Cloud Based Solution) Including Licenses, Maintenance & Support Access to Cloud Platform embedded with VPN Security for machine connectivity Two user licenses (1x system admin & 1x user) One TV display license Real-time data capturing of machine uptime and downtime of 12 injection moulding machine for one site only (factory located at Bangi) 3 data acquisition panel (wall mounted). Each consisting of : <ul style="list-style-type: none"> • 1 x PLC, • 1 x Industrial PC • Panel wiring accessories Wiring cost (include Cable, Metal Trunking and installation) System Installation, setup, configuration, application training, hardware & commissioning & implementation FOC: 2 x Samsung A7 Tablet	152,000	4,500
Managed Wi-Fi for Local Machine Connectivity (3 APs + 3 Wi-Fi Adapters)	5,000	1,500
TCV (2 Years Contract)	301,000	



OEE - MACHINE UTILIZATION MONITORING

Maxis Business Partnership

Maxis Brand & Marketing team expressed high interest to invite Plastictecnic for a joint business partnership, which will include media & public branding in regard to this solution.

Sponsorship is up to 5RM52k

Joint Business Partnership:
Maxis and Plastictecnic as Innovators for IR 4.0



Seeking Plastictecnic's agreement to the following



Spokesperson
To appear in video or print interviews (as spokesperson)



Media Event
To take part in media event launch



Media Tour
Allow for any media or VIP tours in factory (within reasonable lead time)



Business Insight
Share insights on productivity improvements for case study



Testimonials
Sharing session to MPMA on this solution



Q&A

